



El Centro de Corazón  
*Quality Health Care*

## GROWING A HEALTHIER COMMUNITY



# 2022 IMPACT REPORT

Remembering Our Founder Mary Jo May

# TABLE OF CONTENTS

About El Centro de Corazón .....	3
Letter from Marcie Mir, CSW, CEO .....	4
Remembering Mary Jo May .....	5
Board of Directors & Staff .....	6
Audited Financial Statements .....	7
Our Patients .....	8
Our Services .....	10
Community Engagement .....	11
Our Programs .....	12
Our Partners .....	13
2022 Impact .....	14
Outreach Events .....	15
Donor Spotlight .....	16
Making a Difference Luncheon .....	17
Locations .....	18
Connect with Us .....	19

# ABOUT

## El Centro de Corazón

Founded in 1994, El Centro de Corazón (El Centro) is an accomplished Federally Qualified Health Center (FQHC) with three health center locations in Houston's East End. El Centro provides a comprehensive range of health care services for the underserved, uninsured, and underinsured, including **family practice, pediatrics, adolescent care, women's health, dental, and behavioral health services**. Our health centers also provide ancillary services to assist patients in overcoming barriers to accessing health care. In 2022, El Centro provided direct patient care to **12,471** low-income children and adults for **46,991** patient visits.

### OUR MISSION

Our mission is to be the leader in improving the well-being of the communities we serve through the provision of quality health care and the delivery of innovative programs.



---

### OUR VALUES

Community Centered  
Innovative  
Quality Driven  
Honest  
Respectful

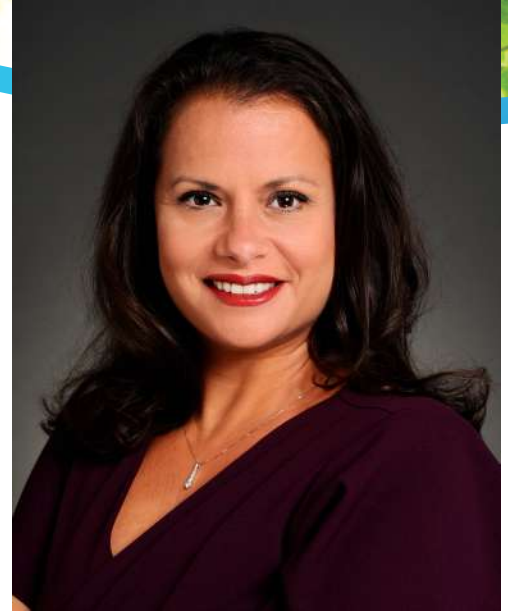
---

El Centro de Corazón  
*Quality Health Care*

# LETTER

## From Marcie Mir, LCSW

I am incredibly honored to present El Centro de Corazón's (El Centro) 2022 Impact Report, which reflects the incredible work of all of our staff members. Each valuable person involved with El Centro wears a different hat and, in some cases, multiple hats—these hats include leaders, healthcare providers, clinic office workers, donors, and volunteer board members. Collectively, we band together to improve the health of each individual and family to realize a healthier community. El Centro represents the “Texas ten-gallon hat” that everyone wears to ensure health equity and health justice for all.



As all emerged from COVID-19's devastating impacts, a sense of normalcy returned in 2022 along with innovative strategies. For example, telehealth services helped mitigate service disruptions. In fact, El Centro provided direct patient care to 12,471 low-income children and adults for a total of 46,991 patient visits.

Other service lines quietly revealed themselves—some from non-medical drivers of health, also known as Social Determinants of Health. Food Insecurity was identified as a top non-medical driver of health. El Centro offered food boxes, food cards, and access to a local grocery store culturally-specific to its patients. This program overlaid bilingual, qualified nutritional counseling, where a dietitian demonstrated how to prepare healthy meals along with healthy substitutions.

In the Fall of 2022, El Centro's founder and its first Chief Executive Officer, Mary Jo May, passed away. She was my mentor, and most importantly, my friend. Mary Jo May always took the “pulse” of the community by listening firsthand to its needs. Her voice ensured that El Centro's patients and their communities had a voice through her advocacy and her work. We dedicate a special section of this report to her memory and accomplishments.

In 2022, El Centro received the Houston East End Chamber's Aldecoa Good Neighbor Award. This is a testament to El Centro's impact.

In closing, El Centro remains true to its mission to be the leader in improving the well-being of the communities we serve through the provision of quality health care and the delivery of innovative programs.

My very best,

A handwritten signature in black ink that reads "Marcie Mir, LCSW". The signature is fluid and cursive.

Marcie Mir, LCSW  
Chief Executive Officer

# REMEMBERING OUR FOUNDER MARY JO MAY

El Centro de Corazón lost a special person in August 2022. Mary Jo May, the organization's founder, passed peacefully with friends by her side after 46 years of immeasurable service to Houston's Second Ward.

Early in her career, Mary Jo became a champion for the health and well-being of this historic and culturally rich neighborhood. After a move from California to Texas as a nun and a member of the Dominican congregation, she worked as the principal for Our Lady of Guadalupe School where she fell in love with the neighborhood's Hispanic culture. Mary Jo then worked at Guadalupe Social Services and saw first-hand the community's great need for family services. In response, she founded El Centro de Corazón in 1994, which first focused on delivering early childhood education and parenting support.

As El Centro grew, Mary Jo identified new community needs and worked tirelessly to develop new programs and services. In 2003, under her direction, the organization merged with Eastwood Health Clinic and became a full-service Federally Qualified Health Center. Because of her commitment, El Centro now ensures the highest quality services for people who would not otherwise have access to excellence in primary care, women's, dental, and behavioral health care.

In October 2013, Mary Jo stepped down as Chief Executive Officer, but she remained a considerable force by continuing her advocacy for health equity and health justice. The awards Mary Jo won over the years for her work uplifting Houston's families say a lot, but nothing compares to what's evidenced in the pages of this book. El Centro serves thousands of people each year and with the highest professionalism and compassion that Mary Jo May displayed. We may have lost a tireless, fearless advocate, but her legacy remains.





# El Centro de Corazón

*Quality Health Care*



## BOARD OF DIRECTORS



- Melissa Fisher, CPA-Retired, *Chair*  
Michael Hinojosa, Community Leader, *Vice Chair*  
Poonam Chadha, Evolent Health, *Secretary*  
Mark Van Elden, Community Health Choice, *Treasurer*  
German Ibañez, Ibañez Consulting  
Bob Longoria, Circulation Concepts  
Lupe Olivarez, Jr., Community Leader  
Carol Paret, Memorial Hermann Health System  
Tom Perich, Hunton Andrews Kurth LLP  
Joseph Rovira, Hunton Andrews Kurth LLP

## EXECUTIVE LEADERSHIP

- Marcie Mir, LCSW, Chief Executive Officer  
Kavon Young, MD, Medical Director  
Shannon Hart, RN, Director of Operations  
Vanessa McKeown, CPA, Chief Financial Officer



# AUDITED FINANCIAL STATEMENTS

## 2022

### Assets

#### Current Assets

Cash	\$3,233,953
Patient Accounts Receivable	\$401,526
Grants & Other Receivables	\$368,747
Contributions Receivable	\$11,650
Fixed Assets	\$4,231,329
Other Assets	\$29,025
<b>Total Current Assets</b>	<b>\$8,276,230</b>
<b>Total Net Assets</b>	<b>\$6,475,095</b>
<b>Total Liabilities &amp; Assets</b>	<b>\$8,276,230</b>

### Expenses

Program Services Expenses	\$10,069,717
Management/General Expenses	\$2,544,941
Fundraising Expenses	\$215,140
<b>Total Expenses</b>	<b>\$12,829,798</b>
<b>Change in Net Assets</b>	<b>(\$518,435)</b>

### Operating Support & Revenue

Patient Service Income	\$6,714,821	55%
Federal Grants	\$3,381,884	28%
Funding	\$1,867,314	15%
Local & State Grants	\$75,303	1%
Miscellaneous Income	\$244,521	2%
<b>Total Revenue</b>	<b>\$12,283,843</b>	<b>100%</b>

### Liabilities

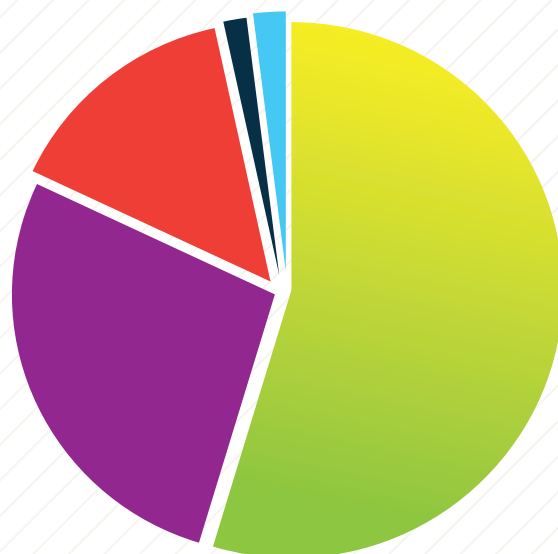
Current	\$753,384
Long-Term	\$1,047,751

### Net Assets

Current	\$5,497,350
Long-term	\$977,745

### 2022 Cost Analysis

Average Cost Per Patient	\$692
Average Cost Per Visit	\$233



# OUR PATIENTS

In 2022, 70% of our patients identified as female and 30% identified as male.  
52% of El Centro's patients are uninsured.

## Gender

- 30% Male
- 70% Female



## Healthcare Coverage

Uninsured	6,290	52%
Medicaid / CHIP	3,993	40%
Private Insurance	816	7%
Medicare	147	1%



# OUR PATIENTS

96% of patients identify as Hispanic, and 76% of patient prefer to speak Spanish when they visit their El Centro provider. 58% live at or below 200% of the Federal Poverty Line



## Ethnicity

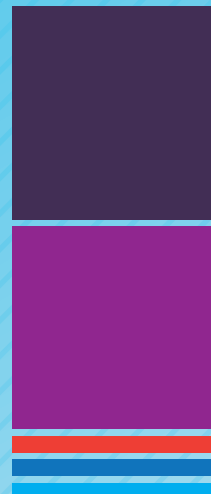
96%	Hispanic
3%	African American
1%	White
<1%	Other



## Federal Poverty Line

### Income

100% and Below	7,232	58%
101% - 150%	3,284	26%
151% - 200%	1,007	8%
Unknown	643	5%
Over 200%	305	2%



# OUR SERVICES



**Family Practice** well exams, school/sports physical exams, sick visits, immunizations, newborn screenings, hearing & vision screenings, cervical cancer & colorectal cancer screenings, chronic disease management

**Dental Services** preventative dental care, exams & x-rays, cleanings, fillings, sealants, simple extractions

**Eligibility Services** Our friendly & bilingual eligibility staff work with patients to assess their unique needs and explore which programs will best support those needs.

**Women's Health Services** prenatal care, postpartum care, well women exams, pelvic ultrasounds, 20-week anatomy scans, colonoscopies, cryotherapy, LEEP procedures, endometrial biopsies, testing for STIs, pregnancy testing, family planning, referrals for mammograms & genetic counseling, newborn circumcisions, infertility evaluation, treatment of incontinence & other pelvic floor disorders

**Behavioral Health Services** psychiatric evaluation, medication management, individual & family therapy, trauma focused cognitive behavioral therapy, play therapy, EMDR (eye movement desensitization reprocessing)

# COMMUNITY ENGAGEMENT AND OUTREACH

## El Centro in Schools

Area schools invited us to present to children and teachers alike about El Centro's work, including Edison Middle and Lantrip Elementary, during the 2022 school year.

El Centro also celebrated the many volunteers who distributed backpacks filled with school supplies for elementary-aged children in Houston's East End.

## Summer Wellness Walks

El Centro joined the Buffalo Bayou Partnership and other East End partners in monthly summer Wellness Walks offering fun free activities and learning topics for families.

## Community Events

El Centro participated in fairs hosted by the Consulate of Mexico, Community Family Centers, Morales Memorial Foundation, and University of Houston, where we shared about our work with attendees and other organizations important to the East End community.

## Business Neighbors

The Halliburton Charity Golf Tournament selected El Centro as a featured nonprofit, where we networked with industry leaders and other hard-working organizations. The East End Chamber of Commerce honored El Centro with the Aldecoa Good Neighbor Award.

## Funding Partners

Private funders that furthered our mission by granting the clinic generous charitable funds to continue working toward our mission included Houston Methodist, John S. Dunn Foundation, and Bank of America.



# PROGRAM INITIATIVES

## **Brainy Clinic – The Basics Houston/The Children’s Museum Houston (Partner)**

El Centro has partnered with The Basics Houston to empower families to care for and cultivate healthy beginnings for their children with a focus on enriching childhood brain development during the early stages of life. The Basics Houston partners with community support systems by promoting the project’s increased access to its free resources for parents and caregivers including a free text messaging platform that provides science-based tips and activities for parents. Additional support is available through collaboration with The Children’s Museum’s Welcome Baby program which includes Welcome Baby bags, Basics Houston FLIP My Keep It Kits, and Basics Houston Fun\*Shop resources.

## **Children’s Wellness Program/ Nutrición con Corazón**

Designed to address the prevalence of childhood obesity in our service area using a comprehensive approach, the program includes medical assessments, individualized treatment plans, one-on-one education classes, weight management structure, cooking classes and /or local food shopping trips, and referrals for behavioral health services.

## **Conservando Corazones**

A hypertension control initiative, to improve the health outcomes of adult patients with high blood pressure, participants are provided self-monitoring blood pressure units to increase their awareness of hypertension and how to control it through preventive care.



# OUR PARTNERS



American Cancer Society  
American Health Imaging  
American Heart Association  
Breast Health Collaborative of Texas  
Communities of Care Initiative  
East Side Imaging  
Growing Roots  
East End Network  
Harris County Public Health  
Houston Health Department  
Houston Independent School District  
Houston Medical Imaging  
Houston Methodist  
L.I.F.E. Houston  
M.D. Anderson Cancer Center  
Memorial Hermann  
Mental Health America of Greater Houston  
Solis Mammography  
Texas Children's Hospital  
The Rose  
University of Houston – College of Medicine  
University of Texas Health Science Center – School of Dentistry  
Urban Harvest

Photo Credit: TACHC

# 2022 IMPACT



**12,471**

**Family Practice  
Patients Served**



**46,991**

**Total Patient  
Visits**



**106**

**Zip Codes  
Served**



**650**

**Back-to-School  
Backpacks  
Distributed**



**7,211**

**Telehealth  
Visits**



**422**

**Mammograms  
Provided**



**1,000+**

**SUDs  
Screenings**



**1,337**

**COVID-19  
Tests**



**1,382**

**COVID-19  
Vaccinations**

# OUTREACH EVENTS



In 2022, El Centro was grateful to have **141** community volunteers donate over **662** hours of time, energy and effort to support its health fairs, back-to-school events, and holiday Posada.

## BACK TO SCHOOL FAMILY EXPO

El Centro's annual Back to School Family Expo distributed **650** backpacks to **325** families with school supplies to elementary-aged children in the East End community. Families also enjoyed gift cards from Walmart, and Family Passes at the Children's Museum. The event coincided with the National Community Health Center Week and the start of the school year.

## EAST END POSADA

El Centro's annual East End Posada distributed coats, gift cards, and toys to over **800** children in need in the East End of Houston. Every year, selected elementary-aged children from local East End schools and community families are presented with gifts.





# DONOR SPOTLIGHT

Picture a world without donors. El Centro de Corazón's work serving people who face barriers to accessing high-quality health services would simply not be possible.

Without donors, we would not be able to provide care in the language our patients speak. We would not be able to attend school functions, health fairs, and community groups to make connections with our patients.

In 2022, 15% of El Centro's revenues were from charitable gifts from individuals, corporations, and foundations. We would like to highlight three important funders:

## **Houston Methodist**

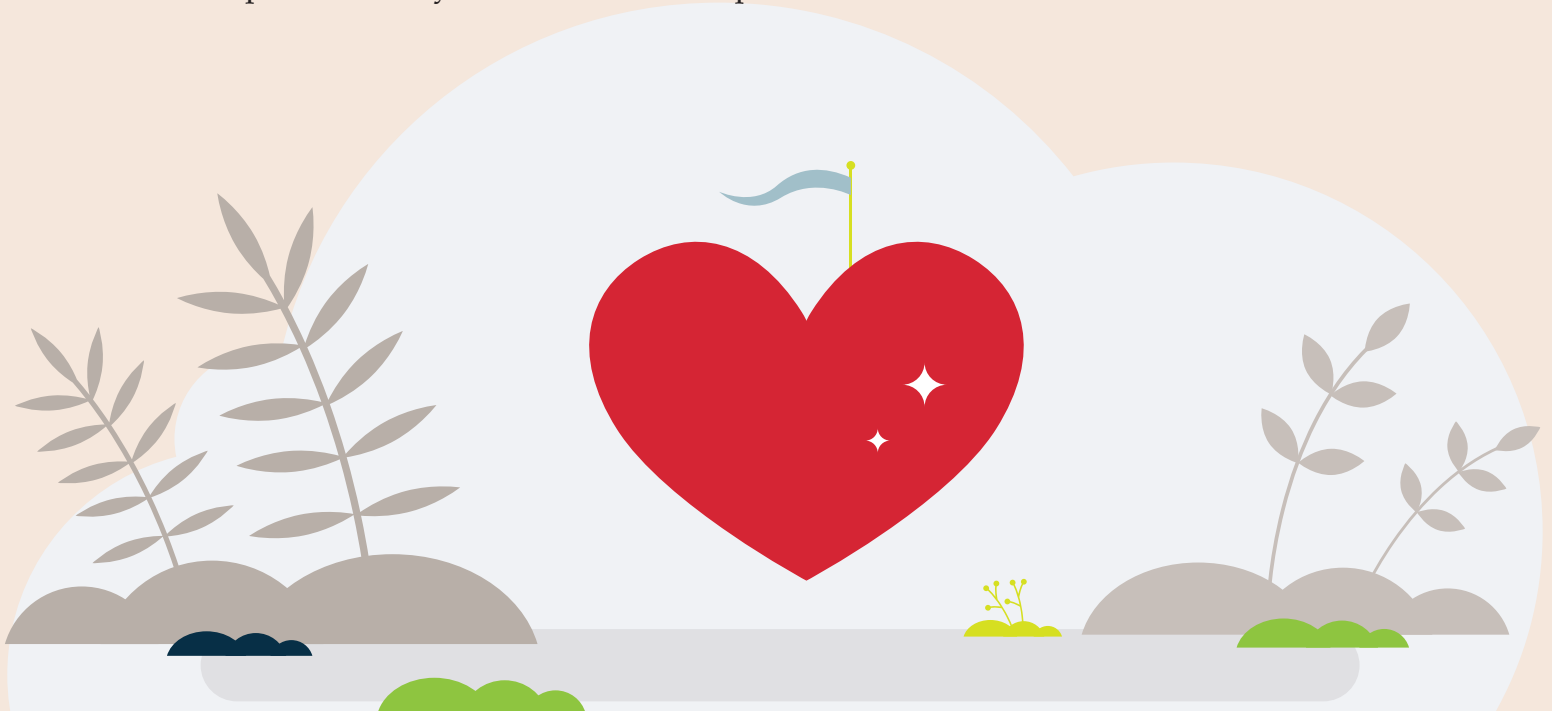
Houston Methodist Community Benefits awarded a grant to increase access to affordable quality health care, including family practice services, pediatrics / adolescents, dental care, women's health, and in-kind labs.

## **John S. Dunn Foundation**

John S. Dunn Foundation contributed to our operations, allowing El Centro to improve the well-being of the communities we serve through the provision of quality health care and the delivery of innovative programs.

## **John P. McGovern Foundation**

The John P. McGovern Foundation awarded a grant to increase access to quality health care and to improve healthy food access for its patients and area residents in the East End.





# 15TH ANNUAL MAKING A DIFFERENCE LUNCHEON Celebrating 28 Years of Serving Houston's East End

Thank you to our guests and sponsors for attending El Centro de Corazón's 15th Annual Making a Difference Luncheon in September of 2022. Thanks to your support of the Luncheon, we raised over \$151,000 to provide quality health care to underserved children and families in Houston's East End.

We would like to thank and recognize our Chairpersons **Kelli Cohen Fein, M.D.** and **Barbara Van Postman**, and Honorary Chairpersons, **Leisa Holland-Nelson Bowman** and **Leila Perrin**, for their incredible work and dedication in making this year's Luncheon a success. El Centro is so appreciative of all our generous sponsors and looks forward to seeing you at the next luncheon event.

---

Right, Hallie Vanderhider, Community Leader Honoree, and Barbara Van Postman, Chairperson

Below Left, L-R Leisa Holland-Nelson Bowman, Barbara Van Postman, Kelli Cohen Fein, M.D. and Leila Perrin

Below Center, Corporate Leader Honoree, Halliburton Charitable Foundation

Below Right, L-R Dr. James McCarthy, Memorial Hermann Health System, Marcie Mir, LCSW, El Centro CEO, and Dr. Esmaeil Porsa, Harris Health System

Photo Credits: Daniel Ortiz

---



# LOCATIONS



## **MAGNOLIA HEALTH CENTER**

7037 Capitol Street, Suite N100  
Houston, Texas 77011



## **EASTWOOD HEALTH CENTER**

412 Telephone Road  
Houston, TX 77023



## **JOHN S. DUNN HEALTH CENTER**

7635 Canal Street  
Houston, Texas 77012



## **MAILING ADDRESS**

P.O. Box 230209  
Houston, Texas 77223

---

**PLEASE VISIT OUR WEBSITE**

**WWW.ELCENTRODECORAZON.ORG**

**CONNECT WITH US ON SOCIAL MEDIA**

**Facebook** EL CENTRO DE CORAZÓN

**Instagram** @ELCENTRODECORAZON\_FQHC

**X** @EL\_CENTRO\_FQHC

**LinkedIn** EL CENTRO DE CORAZÓN

---



Photo Credit: TACHC



**El Centro de Corazón**  
*Quality Health Care*